

# Les produits *adesol*

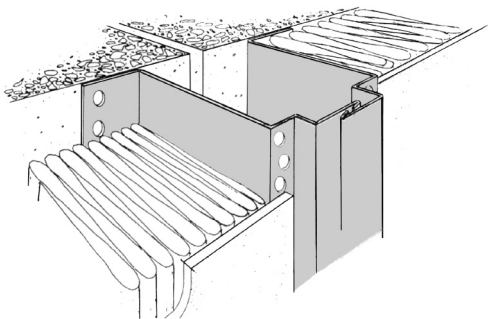
## PROFILES POUR ISOLATION EXTERIEURE JOINTS DE DILATATION & DEPARTS D'ISOLATION

Gamme 5

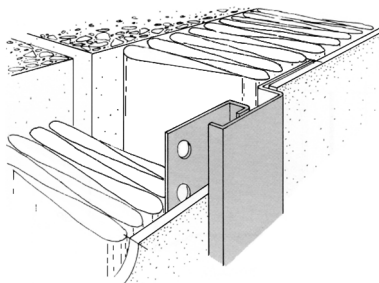
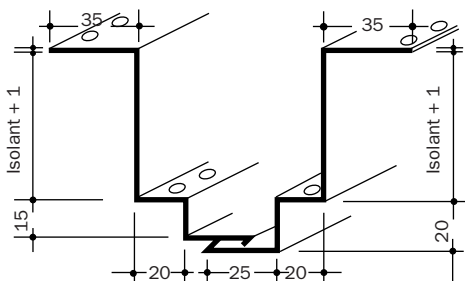
**ALUMINIUM BRUT**  
Anodisé, prélaqué

Longueur mm : jusqu'à 4000

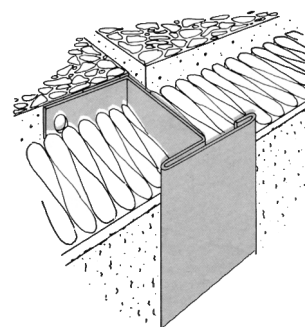
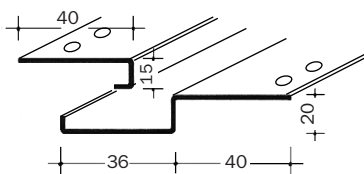
### Joint de dilatation



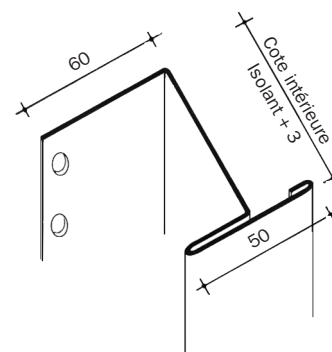
JOINT DE DILATATION  
ATP - 237



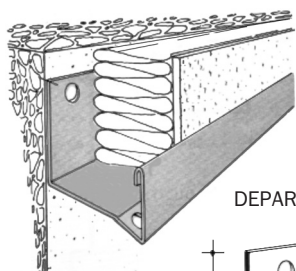
JOINT DE DILATATION  
ATP - 238



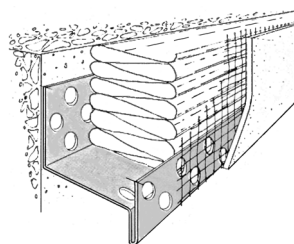
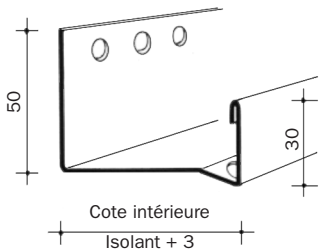
JOINT DE DILATATION  
ATP - 289



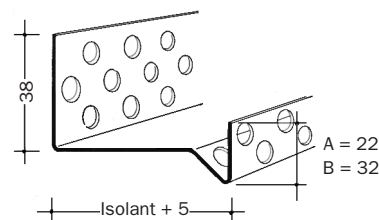
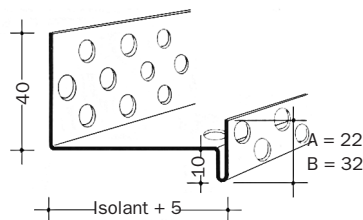
### Départs d'isolation



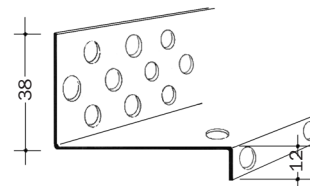
DEPART ATP - 281



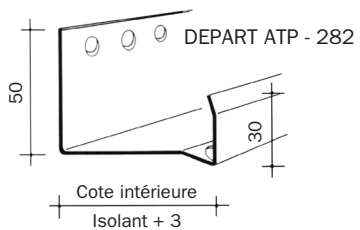
SOUBASSEMENT ATP - 226 A/B



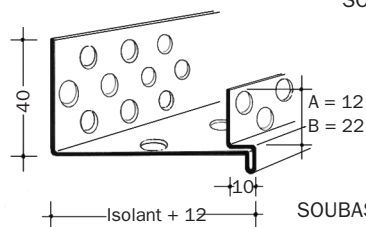
SOUBASSEMENT ATP - 228 A/B



SOUBASSEMENT ATP - 221



DEPART ATP - 282



SOUBASSEMENT ATP - 232 A/B

Pour vos commandes, désigner le profilé en précisant l'épaisseur de l'isolant utilisé.

Les profilés en aluminium anodisé & prélaqué sont toujours protégés par un film plastique.  
Les profilés en aluminium brut sont livrés sans protection, sauf demande spéciale.